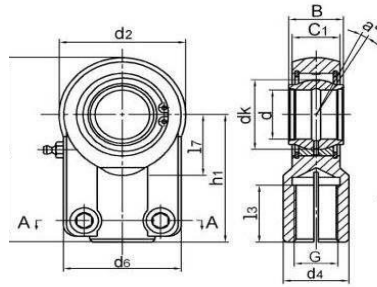
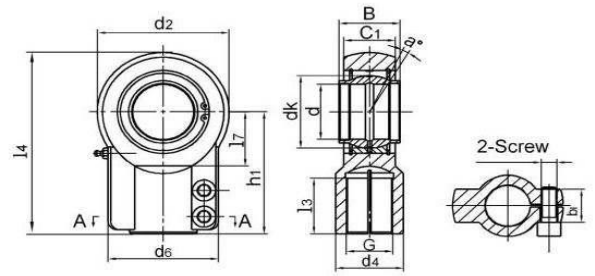


TAPR-CE SERIES THREADED HYDRAULIC ROD ENDS STEEL/STEEL WITH WIDE INNER RING BEARING



Under 50mm Bore



TAPR-CE Over 50mm Bore

Part Number	Dimensions(mm)													a° angle	Load ratings (KN)		Screw	Weight (kg)
	d	B	dk	C1	d2	G-6H	h1	l3	(l2)	l7	d4	d6	b		Dynamic	Static		
	TAPR12CE*	12	12	18	11	32	M12X1.25	38	17	54	14	16	32		11	4		
TAPR16CE	16	16	23	13	40	M14x1.5	44	19	64	20	21	40	13	4	17	36.5	M6x12	0.20
TAPR20CE	20	20	29	17	47	M16x1.5	52	23	75.5	22	25	47	17	4	30	48	M8x20	0.35
TAPR25CE	25	25	35.5	22	58	M20X1.5	65	29	94	27	30	54	19	4	48	78	M8x20	0.62
TAPR32CE	32	32	43	28	71	M27x2	80	37	115.5	32	38	66	22	4	65	114	M10x30	1.15
TAPR40CE	40	40	53	33	90	M33x2	97	46	142	41	47	80	26	4	99	204	M12x35	2.18
TAPR50CE	50	50	66	41	109	M42x2	120	57	174.5	50	58	96	32	4	156	310	M16x40	3.96
TAPR63CE	63	63	83	53	136	M48x2	140	64	208	62	70	114	38	4	253	430	M16x40	6.80
TAPR70CE	70	70	92	57	155	M56x2	160	76	237.5	70	80	135	42	4	313	540	M16x40	9.60
TAPR80CE	80	80	105	67	170	M64x3	180	86	265	78	90	148	48	4	400	695	M20x50	13.00
TAPR90CE	90	90	115	72	185	M72x3	195	91	287.5	85	100	160	52	4	488	750	M20x60	19.10

*Non relubricatable

Bearing: GE-HO-2RS Series - Hardened and Phosphated, sliding surface treated with MoS2. Requires Lubrication.

Casting Body: Nodular Cast Iron